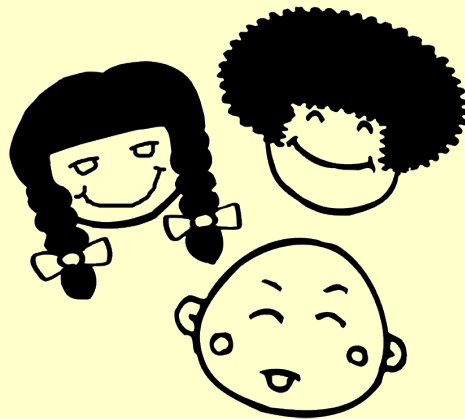


WHAT IS CHILD FIND ?

Child Find is a process, required by the Individuals with Disabilities Education Improvement Act (IDEIA 2004), to locate children, birth through 21, who may have a disability, and be eligible for early intervention or special education services.

Shelby County Schools' goal is to locate, identify, and evaluate all students suspected of having disabilities, including private school students residing within the jurisdiction. Child Find activities for private school students are comparable to activities undertaken for students attending public schools. Child Find includes: vision, hearing, speech screenings, developmental screenings, issuing public service announcements, advertising through print, broadcast media, distributing brochures, communicating with Head Start, pre-schools, day care centers and private/parochial schools. Community related presentations, including appearances on public television programs are also conducted.



Enhancing educational opportunity through comprehensive services that address academic, social, health, emotional, psychological, and behavioral needs of students, families, schools, and the community.



Celia Moore, Executive Director

Shawn Page, Director

Exceptional Children and Health Services

2930 Airways Boulevard
Memphis, Tennessee 38116

Phone: 901.416.5600



Exceptional Children and Health Services

2930 Airways Boulevard
Memphis, Tennessee 38116

901.416.5600

<http://www.scsk12.org>



Shelby County Schools offers educational and employment opportunities without regard to race, color, religion, sex, creed, age, disability, national origin, or genetic information.

WHO IS ELIGIBLE ?

A student must be evaluated and identified as having a disability to be eligible for special education programs and related services. The degree of the student's disability will determine if the student is eligible for services.

The disability categories are:

- Autism
- Deaf-Blindness
- Deafness
- Developmental Delay
- Emotional Disturbance
- Functional Delay
- Hearing Impairment
- Intellectual Disability
- Intellectually Gifted
- Multiple Disabilities
- Orthopedic Impairment
- Other Health Impairment
- Specific Learning Disabilities
- Speech or Language Impairment
- Traumatic Brain Injury
- Visual Impairment

If you believe that a child needs additional educational support services in order to achieve his/her potential, contact Shelby County Schools Exceptional Children at (901) 416-5600.

HOW IS A CHILD REFERRED ?

A parent or any person concerned about a child may make a referral for assessment. After a child is referred, written permission must be obtained from the parent for an assessment to occur. A written report will then identify and interpret the findings and indicate whether the student does or does not have a disability that may require special education services. The initial IEP (Individual Educational Plan) team will then meet on behalf of the student to determine eligibility for special education. If the student is eligible, the team will then develop an IEP. If the student is not eligible for services, the eligibility document will reflect ineligible status.

EXCEPTIONAL CHILDREN AND HEALTH SERVICES

OVER 1,000 INSTRUCTIONAL PROFESSIONALS

MORE THAN 16,000 STUDENTS

A FULL CONTINUUM OF SERVICES

16 DISABILITY CATEGORIES

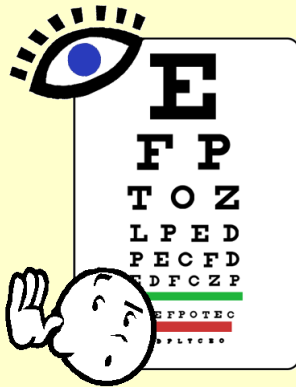
WHAT SERVICES ARE AVAILABLE ?

Shelby County Schools offers a wide array of special education services and related services to children with special needs. They include the following:

- Assistive Technology Services
- Audiology Services
- Program for Children with Autism
- Comprehensive Development Classes
- Gifted and Talented Program
- Hearing Impaired Program
- Homebound/Hospital Instruction
- Incarcerated Youth/Alternative School
- Instructional Resource Program
- Preschool Program
- Private School Student Support
- Seriously Emotionally Disturbed
- Speech/Language Services
- Transition Support
- Transportation
- Visually Impaired Program
- Vocational Rehabilitation

For more information or to refer a child, call (901) 416-5600.

SCREENINGS & EVALUATIONS



Shelby County Schools offers **FREE** hearing, vision, speech-language and educational screenings and evaluations. Children who live in the Shelby County Schools district or attend a private

school in the district, as young as 3 years of age through high school seniors, are eligible for the service.

If you suspect that your child has a disability, please call to schedule an appointment for screening.

- (901) 416-5206 ~ Vision Screening**
- (901) 416-5206 ~ Hearing Screening**
- (901) 416-5206 ~ Speech/Language**
- (901) 416-5600 ~ Psycho/Educational**

Free hearing, vision, speech-language and educational screenings and evaluations will be done at a Shelby County school or at

Colonial Hearing, Speech & Vision Center
4774 Sea Isle Road
Memphis, Tennessee 38117